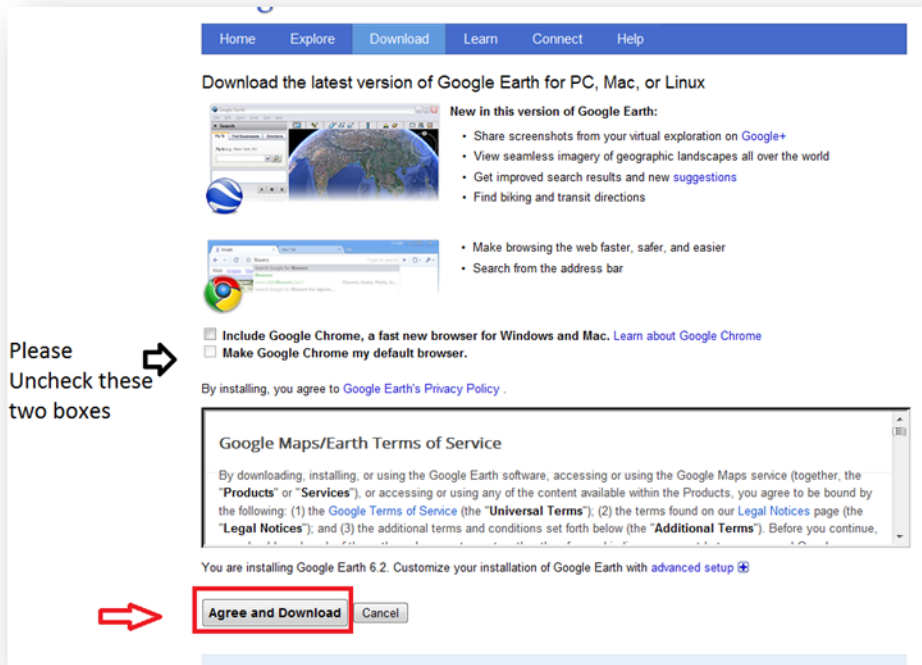


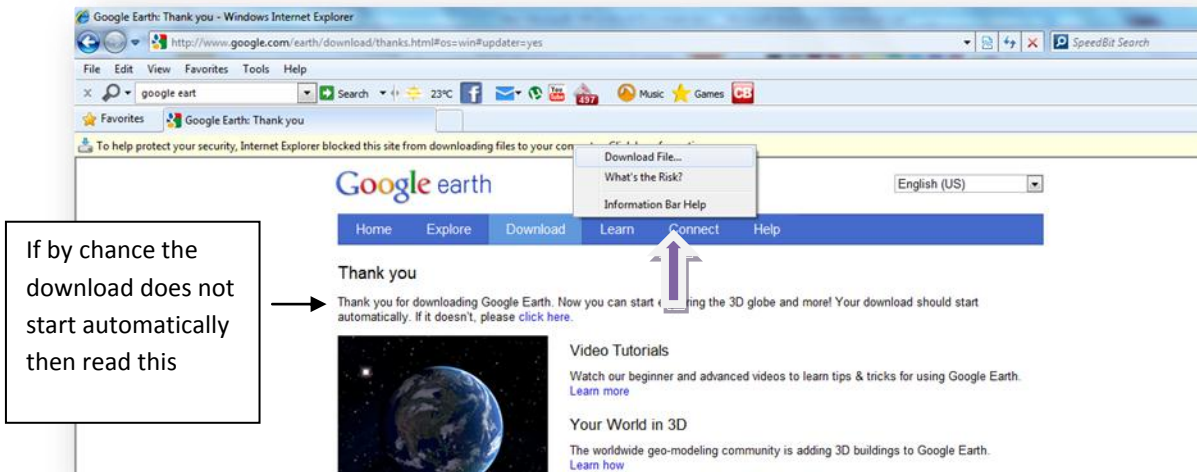
How to find latitude and longitude

- 1) First you need go to the site <http://www.google.com/earth/download/ge/agree.html> from internet explorer
- 2) Then Click on Agree and download



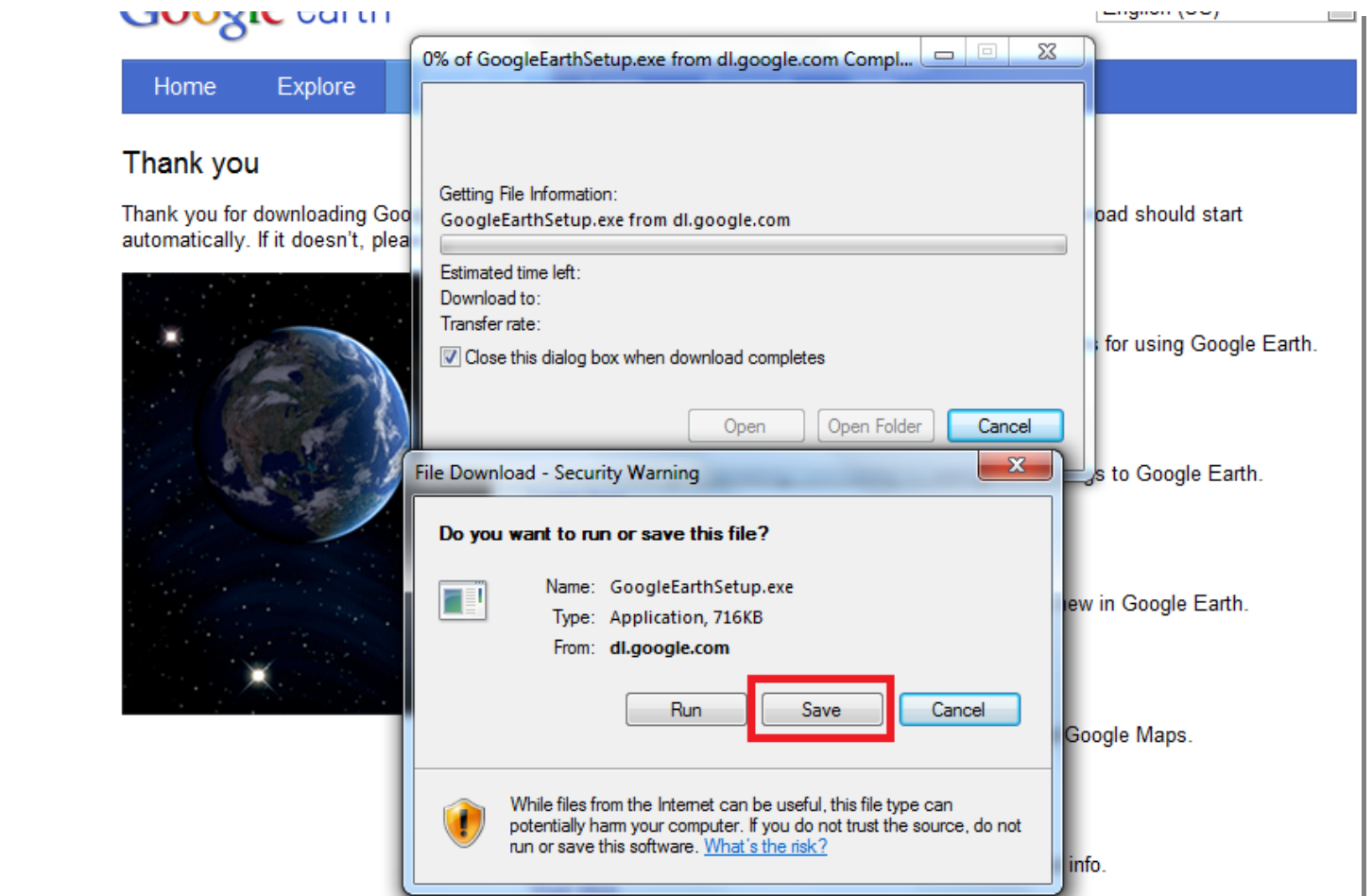
Please
Uncheck these
two boxes

- 3) If you have turned on the popup blocker this is the scenario, you need to right click and say download file ,



If by chance the
download does not
start automatically
then read this

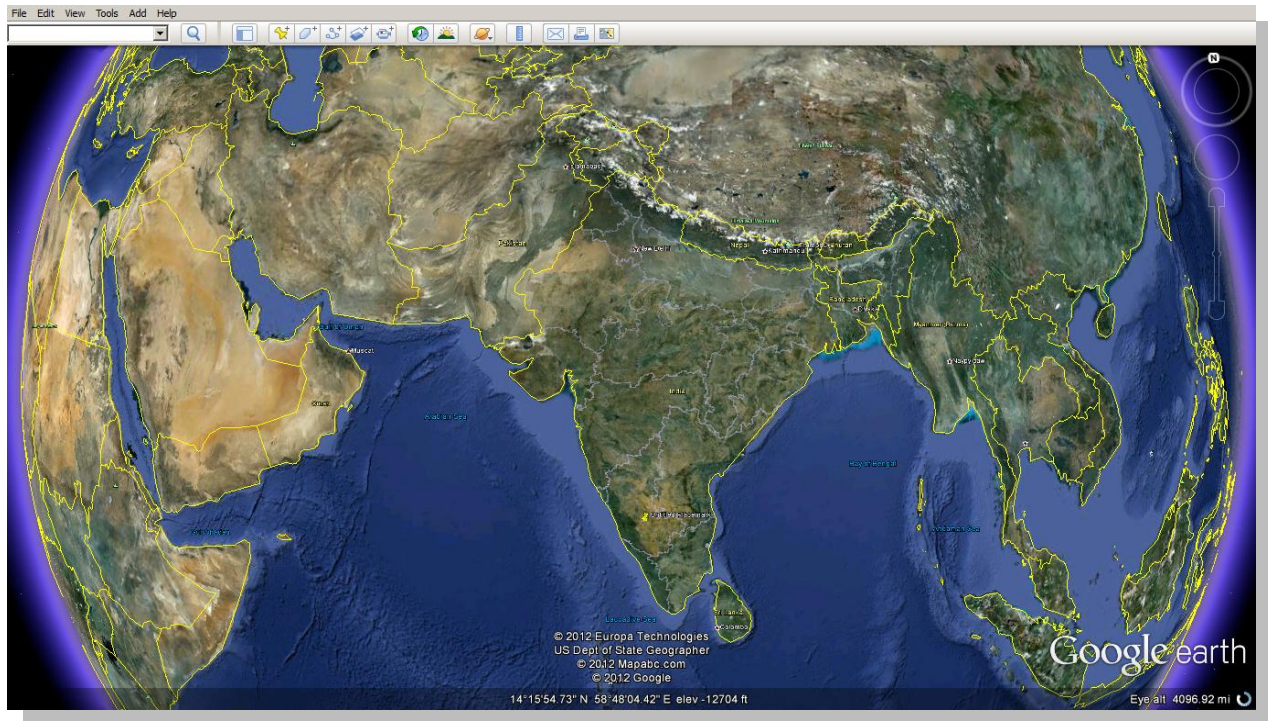
Then Download the file by clicking on save to the desired folder in your hardisk.



Then after downloading Google earth then install it .

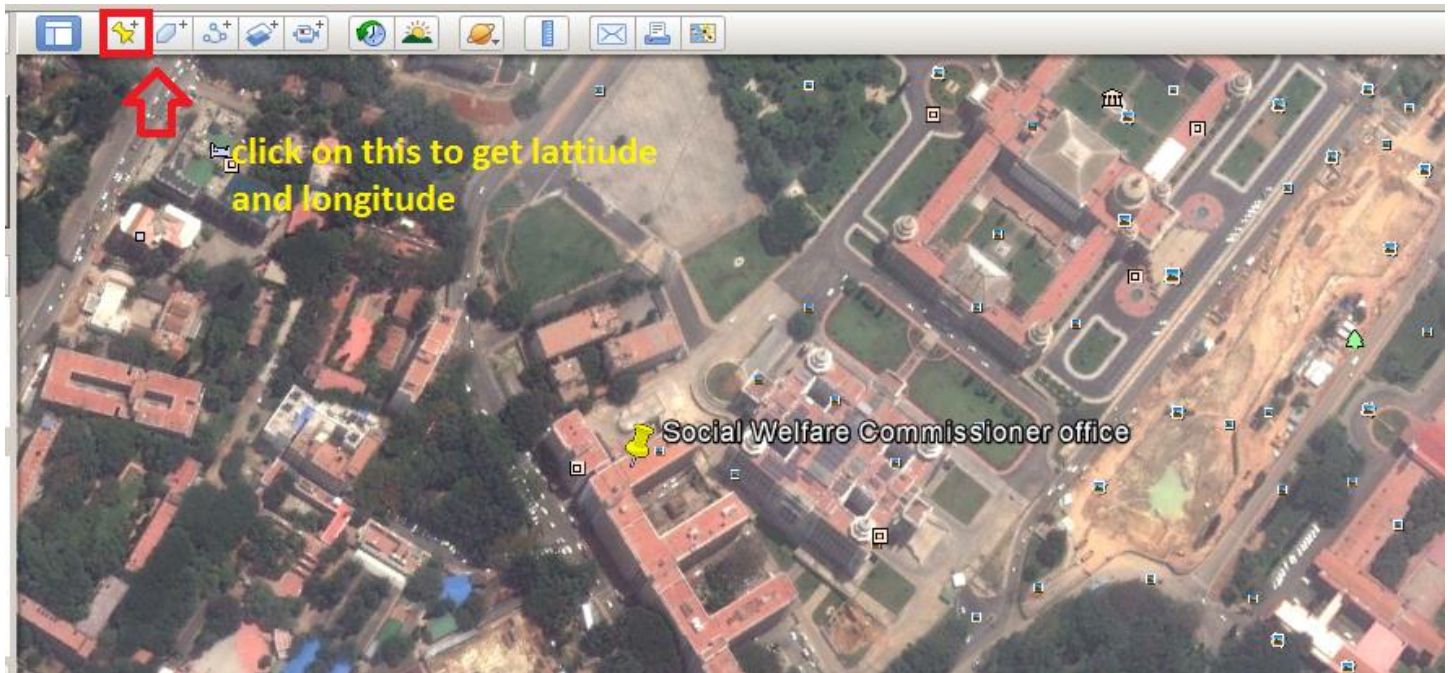
Note : This the scenario only when you have turned on the popup blocker , If the pop up blocker is not turned on , you will directly get the the above screen , if any problems still persist you can disable the popup blocker by going to tools->pop up blocker->turn off pop up blocker.

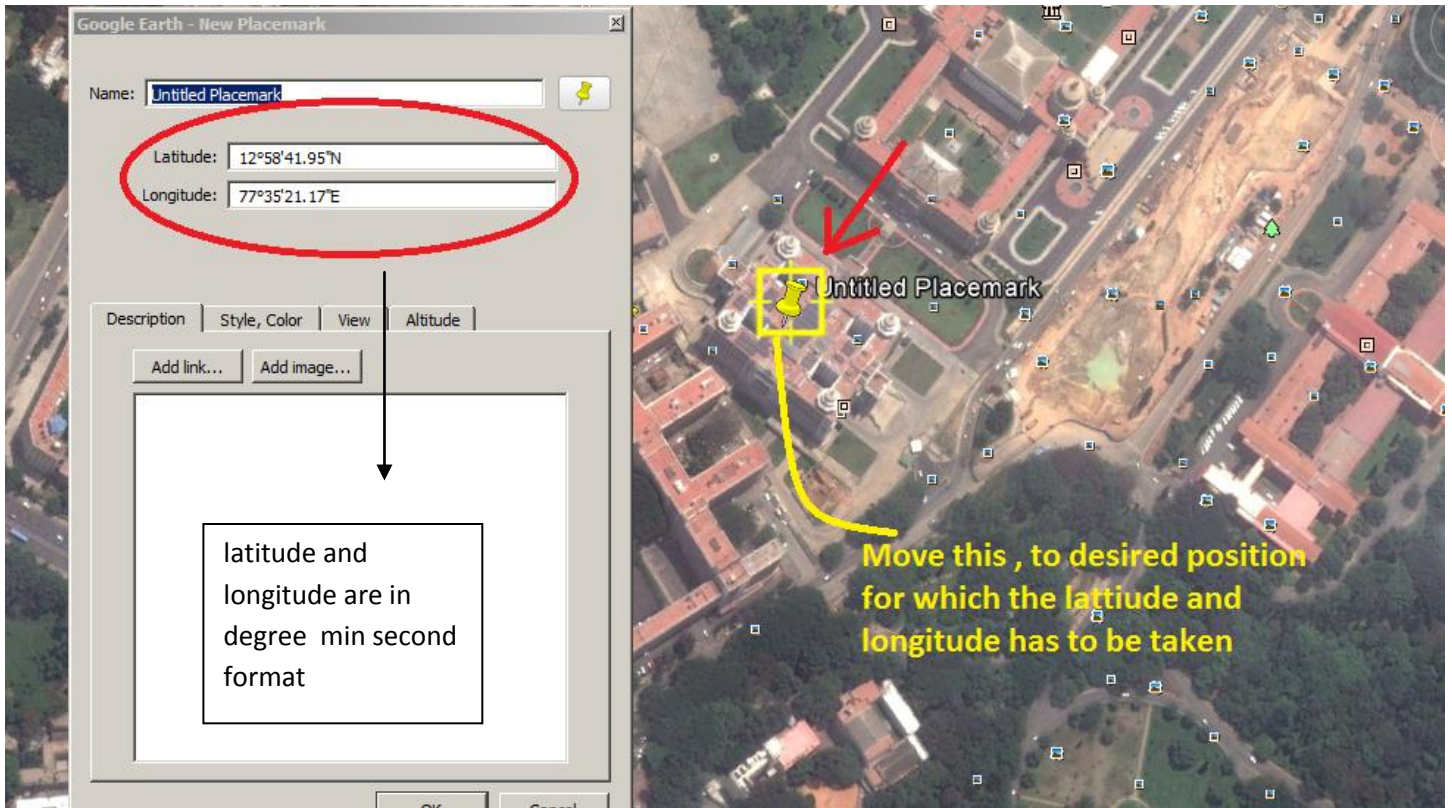
4) After Installation go to Google Earth and navigate to India then to Karnataka , by moving the mouse over the globe with left click



5) Zoom into karnataka and find your position in the map , **zooming** can be done by **SCROLLING THE MOUSE WHEEL**

6) Getting the latitude and longitude now ,

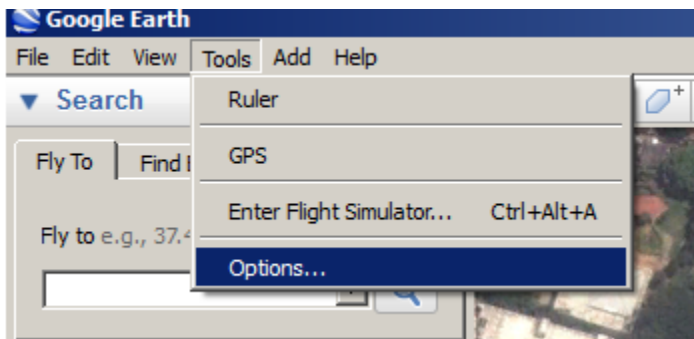




Use this latitude and longitude for filling up the data .

Note : If the latitude and longitude is not in Degree minute seconds follow the bellow procedure to get it

Goto tools and then options



Then click on Degree, Min, Seconds

